

MAX-Quantum

interferometer



Single fiber



Fast measurement



Auto focus



Multi-fiber



Fast measurement



White light, phase shift

Fixtures for bare fiber, single and multi-fiber connectors, including MT16/32



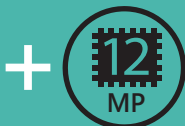
USB 3.0 SuperSpeed connection

Weight 10.6 lbs

What makes it unique?



Large field of view



Large imaging sensor



High resolution



High contrast optics



Reliable scratch detection



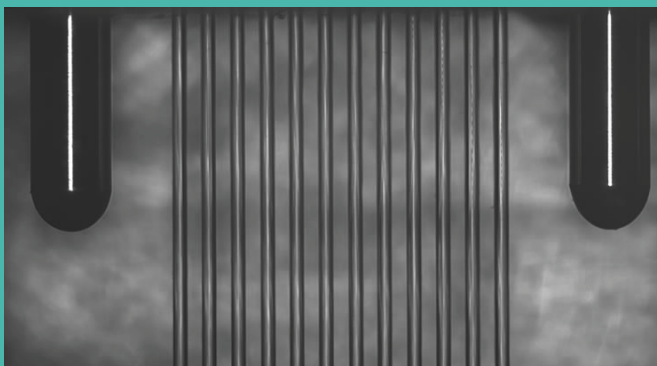
MT16/32 in one scan



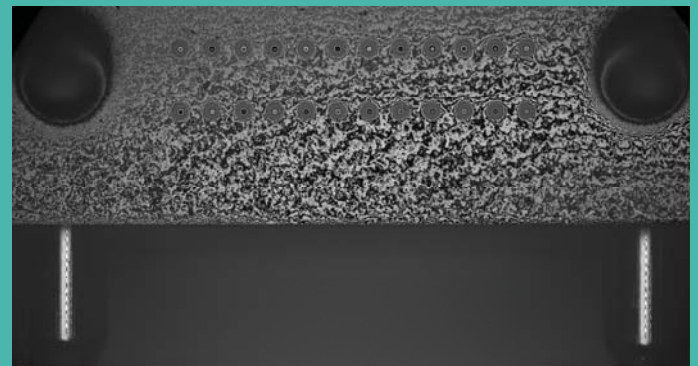
Additional parameters

Additional MT ferrule parameters required by IEC

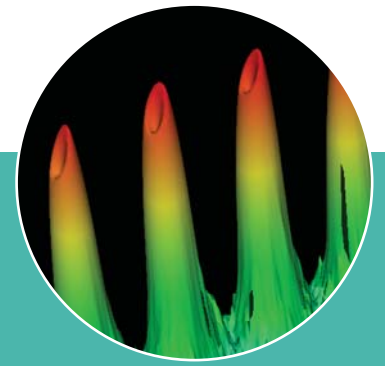
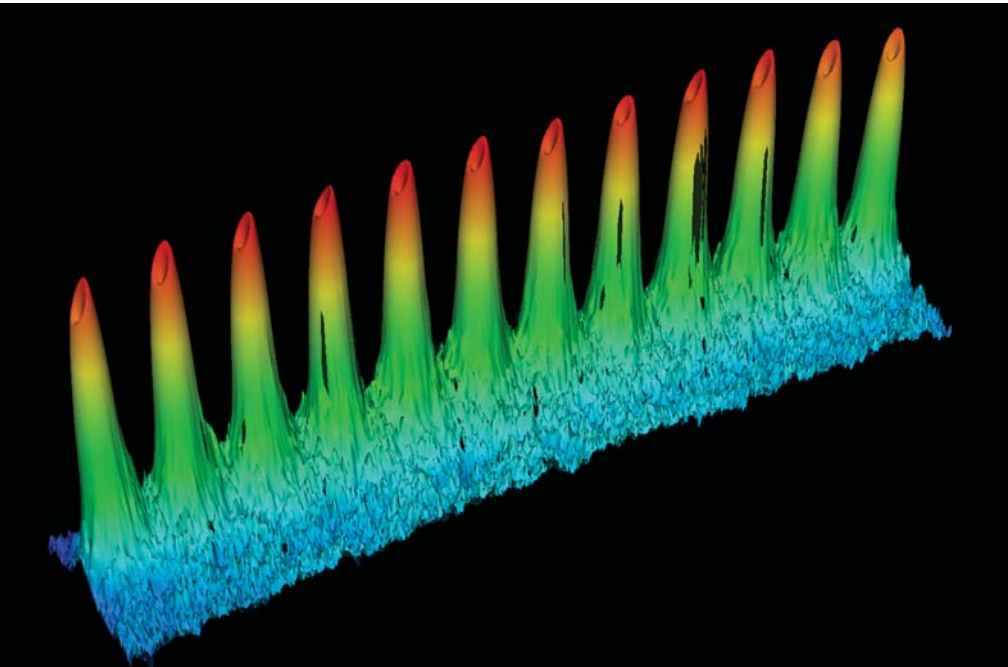
- angles and concentricity of fiber holes
- angles and parallelism of guide holes
- angles and parallelism of guide holes



Side view of MT bare ferrule with inserted pins and fibers

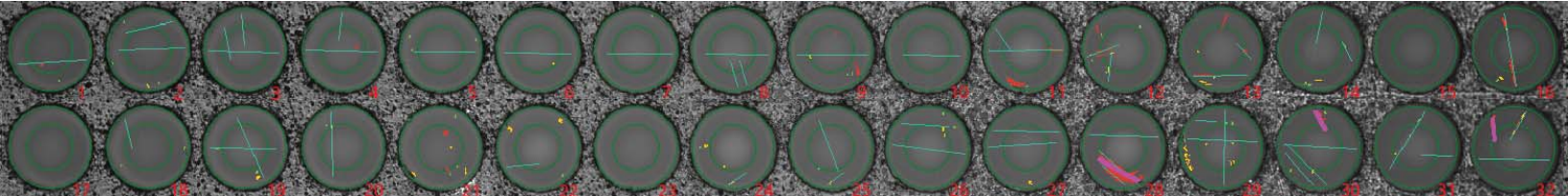


Side+front view of MT ferrule with pins



Applications

- Single and Multi-fiber Patchcords
- Mil Spec Termini
- Laser Cleaved Ribbons
- Cleaved Bare Fiber
- Bare Ferrule
- Large Diameter Fiber
- Flat Polish



Specification

Repeatability C.F.*: ROC: 0.9% (MT12); 0.04% (SC/APC)
 Fiber Height: 0.8 nm (MT12); 0.1 nm (SC/APC)
 Angles: 0.005 deg (MT12); 0.0002 deg (SC/APC)
 Apex Offset: 0.04 μ m (SC/APC)

Repeatability C.R.*: ROC: 1.2% (MT12); 0.05% (SC/APC)
 Fiber Height: 1.1 nm (MT12); 0.4 nm (SC/APC)
 Angles: 0.01 deg (MT12); 0.006 deg (SC/APC)
 Apex Offset: 1.0 μ m (SC/APC)

* Values calculated from 30 consecutive measurements without interaction on connector between measurements (connector fixed).

Dimensions (H \times W \times L): 181 mm \times 213 mm \times 117 mm (7.13 in \times 8.39 in \times 4.61 inches)

Weight: 4.8 kg (10.6 lbs)

Power supply: external, USB 3.0 cable, 12 V DC power adapter



software supplied with Sumix probes

3532 Seagate Way, Suite 100, Oceanside, CA 92056, USA
<http://www.sumix.com>
 E-mail: info-team@sumix.com
 Tel.: +1 (877) 233-3385